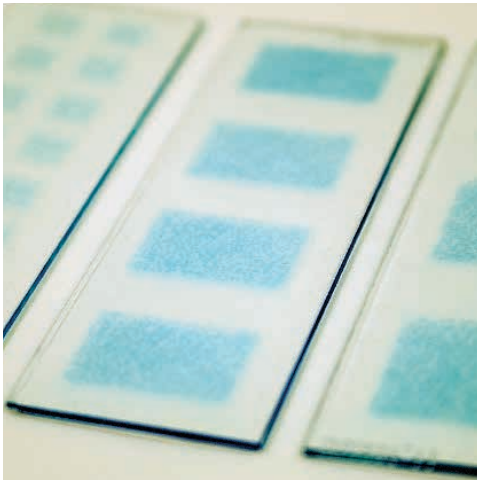


BECOME AN EXPERT

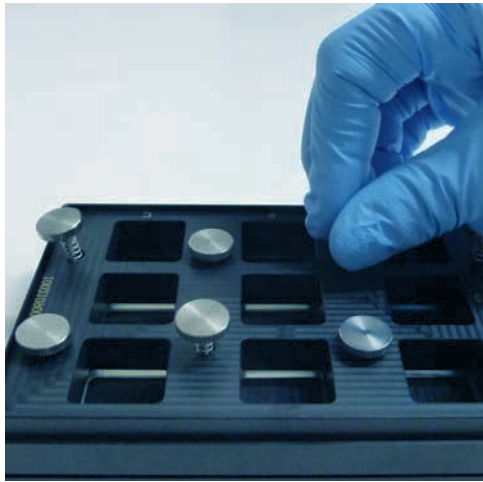
Learn all you need to know about laser-printed microarrays and epitope mapping.



**Spring
2027**

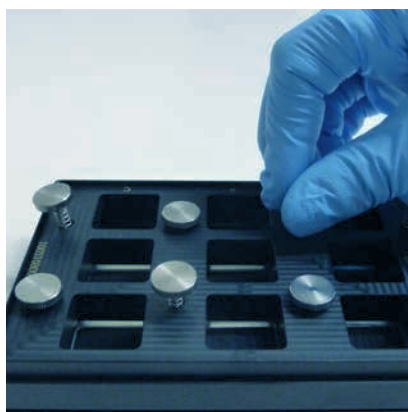
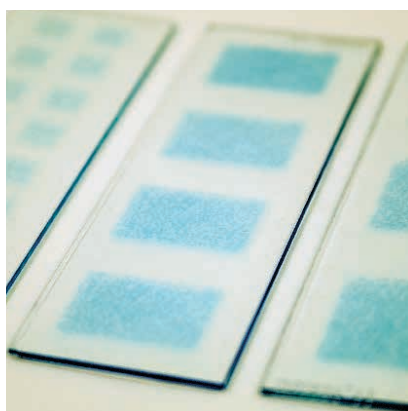
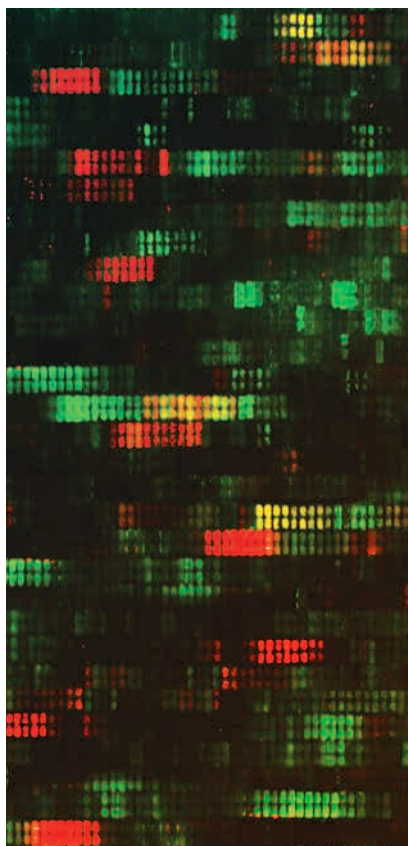
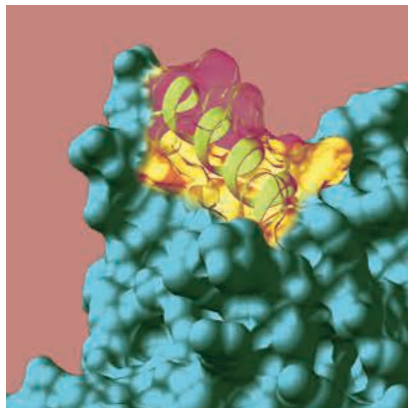
Join us in Heidelberg for a 2-day hands-on training. Register now!

training@pepperprint.com



For more information about this course, visit our website at:
www.pepperprint.com/updates/practical-courses





PROGRAM

Day 1

- 9:45 - 10:00 Get together
- 10:00 - 10:15 Talk 1 - Introduction to PEPperPRINT
- 10:15 - 11:15 Talk 2 - Technical instructions on the assay
- 11:30 - 12:00 Talk 3 - Applications of PEPperPRINT Peptide Microarrays
- 12:00 - 13:00 Lunch
- 13:00 - 15:00 Hands-on training in the laboratory
- 15:15 - 16:00 Tour of production facility and Talk 4 - cLIFT technology
- 18:00 Dinner

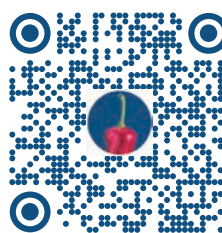
Day 2

- 9:45 - 10:00 Get together
- 10:00 - 12:00 Hands-on training in the laboratory
- 12:00 - 13:00 Lunch
- 13:00 - 13:30 Talk 5 - Data acquisition and analysis
- 13:30 - 17:00 Hands-on training: data analysis
- 17:00 Departure

Training venue

PEPperPRINT GmbH HQ
Tullastr. 2
69126 Heidelberg
Germany

+49 6221 7264889



How to get there by public transportation:

The PEPperPRINT Headquarters is located within walking distance (11min) from the Tram Station "Rohrbach Süd" or from the bus station (5min) "Englerstraße"

Recommended Airports:

Frankfurt am Main (FRA)
Shuttle service to Heidelberg from Frankfurt Airport: <http://frankfurt-airport-shuttles.de/en/home-2/>
or <https://www.tls-heidelberg.de/en/>
You can also take the Train from "Frankfurt(M)Flughafen" to Heidelberg Hbf.

Stuttgart (STR)
You can take the Train from "Stuttgart Flughafen/Messe" to Heidelberg Hbf.